

# Baseline Barrens Nature Preserve

Indiana Department of Natural Resources - Division of Nature Preserves

Eco Logic, LLC

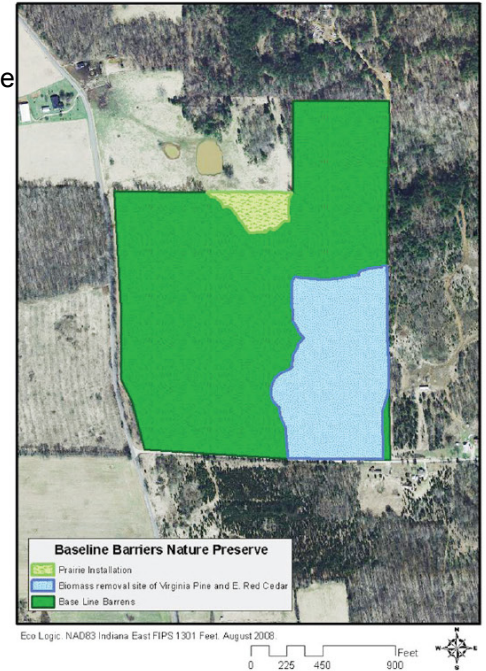
**Project Profile**  
Prairie and Woodland  
Restoration

## Prairie Installation

### Washington County, 70 acres

This preserve is one of the largest remaining examples of the Indiana Karst Barrens that were once common in Washington and Harrison County. Baseline Barrens Nature Preserve is dominated by prairie grasses and forbs while the woodlands are dominated by Post Oaks and Black Oaks. There are also several rare species present on the property, including the Rough Green Snake, Englemann's Addertongue Fern, and the endangered Mottled Duskywing Skipper.

The project involved biomass removal of 17 acres of mature Virginia Pine and Eastern Red Cedar to open up an existing prairie remnant. The goal was to expand the cover of New Jersey Tea (*Ceanothus americanus*), an important larval food plant for the rare Mottled Duskywing Skipper Butterfly. Great care was taken to avoid soil disturbance by utilizing a piece of equipment designed for sensitive areas. The work was rewarded with large areas of native wildflowers blooming in the first season after the completion of the project and several new locations of *Ceanothus*. A prairie planting with local genotype seed was installed on severely disturbed soil areas on the northern boundary of the property to help improve seed bank restoration in a former feedlot.



Cedars and pines were felled in one direction for easy removal



Low ground pressure tracked skid steer used on frozen ground to minimize ecological footprint



Tree trunks were ground with a level grinder and removed from the site